

Polycure is “the trusted name in timber floor coatings”. A division of Mirotone, a coatings industry leader since the 1930’s, Polycure’s range of specialist coating technology has been developed in Australia for in-situ application in Australian conditions.

From moisture cure polyurethanes and two-pack polyurethanes to fast dry solvent based sealers, oil finishes and environmentally friendly water based floor coatings, Polycure has a coating system to meet your requirements.

AQUAPRO	Water based coatings
DURAPOL	Moisture cure coatings
POLYTHANE	Two pack polyurethane coatings
NATUROIL	Oil based coatings
FASTASEAL	Sealers
AQUACARE	Floor maintenance
TITAN	Sealer / Moisture Cure Coatings

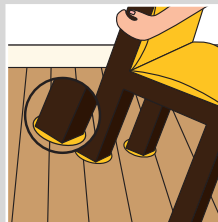
Polycure floor coatings are quality, hard wearing, tough coatings that have been designed to give excellent durability. Like all quality products the durability is dependent upon the proper care and maintenance.

For more information, visit our frequently asked questions.

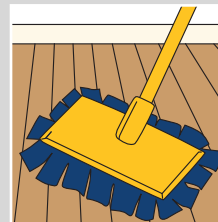
www.polycure.com.au/about/faqs



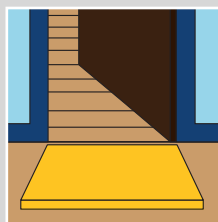
Floor Care



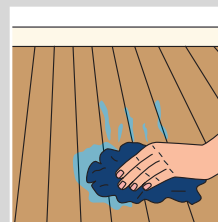
Allow 24 hours before replacing furniture. Apply felt pads to furniture feet where required.



Sweep or electrostatic mop your floor regularly to keep it free of dust and dirt.



Place mats at all entrances for wiping feet. This is the best way of keeping dirt outside & away from the floor.



Wipe off all spills immediately. Scuff marks can be removed with a solution of AQUACARE Floor Clean and water.

Distributed by:



For distributor information, product enquiries & technical advice

 **www.polycure.com.au**

+61 2 9795 3700 **+61 1300 132 202**

 **marketing@mirotone.com.au**

Manufactured by **Mirotone Pty Ltd**
8/26 Nelson Road, Yennora NSW 2161

Find us on   



TIMBER FLOORS WHAT TO EXPECT

A Guide to the care and maintenance of timber coated floors.



Considerations

Having decided on the installation of a feature timber floor or renovation of an existing floor (Mosaic, Block, Parquetry Flooring) ensure that the style of timber flooring chosen is suitable for your lifestyle. In order to reduce the risk of mistakes caused by lack of understanding, Polycure recommends an experienced professional flooring contractor is consulted during the selection process as there are many considerations for each individual floor. With this in mind, we have set out a few points for you to consider.

- Your local environment (coastal, inland, cold, dry or humid).
- Installation environment/design considerations.
- Timber quality & conditioning (acclimatisation).
- Installation & experienced flooring contractor.
- Sanding & preparation, prior to & between coats.
- Coating finish & suitability.
- Coating application techniques and system integrity.
- Care and maintenance considerations.
- Finally, always insist on a quality flooring contractor who uses only superior Polycure coating products.

What to Expect

As timber is a natural substance, the final appearance of a timber floor can vary due to several factors including the colour, board width, immediate environment, the quality of the flooring (grade), its installation, the final finish to be applied, and the level of contractor expertise. Discuss these factors with your professional flooring contractor.

- Get good advice from your contractor and if in doubt, get a second opinion from a recognised body or Flooring Association within your state.
- Nails to be punched and filled, end joins, knots and parquetry to be adequately filled. It is not recommended practice for gaps between boards to be filled.
- Some minor imperfections and dust will be evident in the floor finish. It's not practical or reasonable to expect a furniture finish on your floor.

- Down lights and some fluorescent lights will highlight swirl marks on the coating.
- A Polycure floor finish will retain its original quality appearance as long as it is correctly cared for and maintained throughout its life.

Preparation

Timber flooring is a natural product and will be influenced by its local environment. Awareness and correct preparation of the floor prior to coating will ensure the quality of the floor and its finish:

- Confirm your requirements and expectations with your contractor. Ensure that the flooring involved is of suitable quality and properly acclimatised to its intended environments.
- Complete all other building maintenance prior to coating floors. Unless correctly managed the activities of other trades will affect the overall finish. Foot traffic and the activities of other trades often introduce contaminants or foreign materials to the floor. These cause coating defects that require costly repairs such as re-sanding and coating.
- Do not install carpeting or apply the final coat of paint to walls and skirting boards prior to completion of the flooring project.
- Prepare the site. Remove anything that may be an obstacle to the flooring works. Cover curtains, seal any draught points and air vents, clean dusty areas and fittings, have gas and electrical appliances disconnected. Ensure all food is removed from the area (fridges and cupboards).
- It may be wise to arrange alternate accommodation for the length of sanding and coating process. (Approx. 3-5 days) to allow thorough drying of the floor and avoid the possibility of exposure to unpleasant odours during drying time.
- Although your floor can be walked on within 24-48 hours, full curing of the floor will take 10 to 14 days.

Attention to these relatively minor details will ensure that the flooring project is successful and its full potential reached. The result will be a beautiful hard wearing floor that will last for many years.

What not to Expect

- A "furniture finish". Be aware of the floor's pre-existing natural variations, defects or problems, these often enhance the final look.
- If timber flooring is damaged from scratches, abuse, borer, stains etc., a coat of polyurethane is rarely all that is required to correct the problem, you may need to have the floor restored.

Be aware that over time, both the floor finish and choice of timber exposed to light will become either darker or lighter than the original installation colour. To minimise the exposure use blinds, window awnings, UV filters and change the furniture layout periodically.

AQUACARE Floor Maintenance Systems

A regular cleaning program will ensure your floor remains in a pristine condition (see over page). Damp mopping your floor regularly will provide an effective deep clean - used in conjunction with a mild cleaner such as Polycure's AQUACARE Floor Clean and maintenance coatings.

- AQUACARE Floor Clean is a safe to use, ammonia free detergent for regular cleaning of floors.
- AQUACARE Revive is an easy to apply, quick drying high wax content polish. AQUACARE Revive is designed to rejuvenate and protect floors in-between periodic recoats with an AQUAPRO or other Polycure coating system. AQUACARE Revive provides a durable finish with excellent scuff and black heel mark resistance. In commercial environments AQUACARE Revive may be mechanically buffed.

For more information on AQUACARE Floor Maintenance Systems visit

www.polycure.com.au/products/maintenance/



Some Final Thoughts!

- Do not walk on the floor between coats as this can affect the coating system.
- Don't be surprised to see small shrinkage gaps at board edges during dry times and gaps closing during wet periods.
- Although you may be tempted to comment on a floor before the final coat is applied, it is generally better to wait and allow the contractor to present the floor to you when the job is complete.